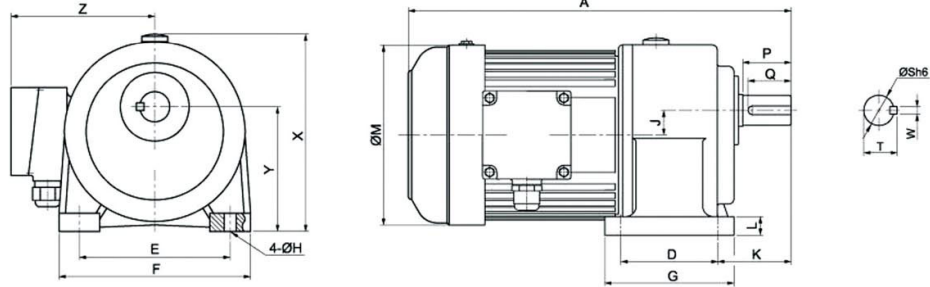
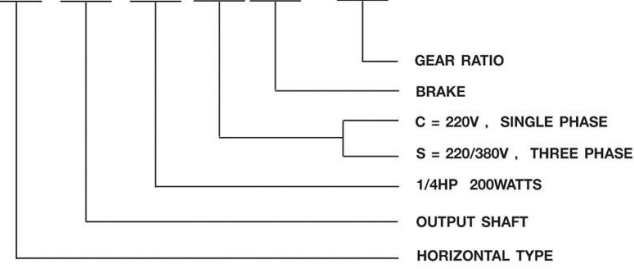


E MODEL CODE

E - 22 - 200 - S - B - 1 : 60



输出轴尺寸 Output Shaft					
输出轴 Shaft		键槽 Keyway			键 Key
Sh6	P	W	T	Q	B x H x L
ø18	30	5	20.2	27	5 x 5 x 27
ø22	40	7	25	35	7 x 7 x 35
ø28	45	7	31.1	40	7 x 7 x 40
ø32	55	10	35.5	50	10 x 8 x 50
ø40	65	10	43.5	60	10 x 8 x 60

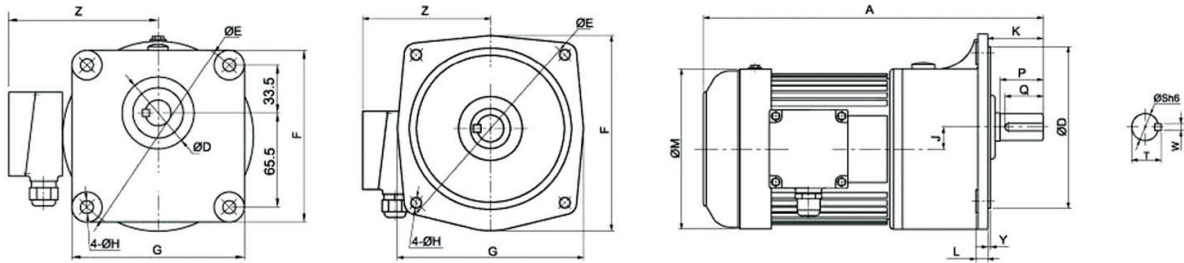
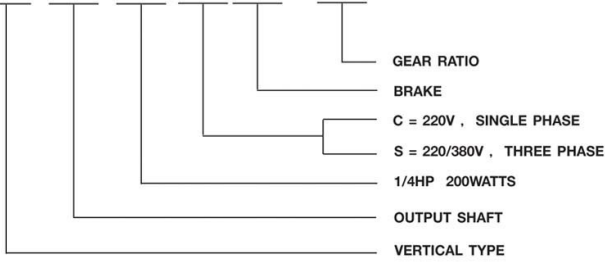


Unit (mm)

功率 Power	减速比 Ratio	箱体 Code	规格 Size	A	D	E	F	G	H	J	K	L	M	X	Y	Z
100W 1/8HP	3-50	1#	ø18	250	40	110	135	65	9	16	50	10.5	133	138	88.5	120
	60-200	2#	ø22	280	65	130	158	90	11	17.5	60	13	133	152	97.5	120
200W 1/4HP	3-10	1#	ø18	280	40	110	135	65	9	16	50	10.5	133	138	88.5	120
	15-90	2#	ø22	315	65	130	158	90	11	17.5	60	13	133	152	97.5	120
	100-200	3#	ø28	350	90	140	178	120	11	23	68	17	133	178	116	120
400W 1/2HP	3-10	2#	ø22	330	65	130	158	90	11	17.5	60	13	167	152	97.5	135
	15-90	3#	ø28	360	90	140	178	120	11	23	68	17	167	178	116	135
	100-200	4#	ø32	395	130	170	215	165	13	30	70	21	167	216	138.5	135
750W 1HP	3-25	3#	ø28	380	90	140	178	120	11	23	68	17	167	178	116	135
	30-120	4#	ø32	410	130	170	215	165	13	30	70	21	167	216	138.5	135
	125-200	5#	ø40	465	150	210	265	205	15	36	85	23	167	250	160	135
1500W 2HP	3-30	4#	ø32	450	130	170	215	165	13	30	70	21	192	216	138.5	146
	40-120	5#	ø40	510	150	210	265	205	15	36	85	23	192	250	160	146
2200W 3HP	3-120	5#	ø40	530	150	210	265	205	15	36	85	23	220	250	160	160
3700W 5HP	3-10	5#	ø40	560	150	210	265	205	15	36	85	23	220	250	160	160
	15-60	6#	ø50	620	170	265	335	230	18	51	120	30	220	306	200	160

L MODEL CODE

L - 22 - 200 - S - B - 1 : 60



B 型法兰 B TYPE FLANGE



输出轴尺寸 Output Shaft					
输出轴 Shaft	键槽 Keyway			键 Key	
Sh6	P	W	T	Q	B x H x L
ø18	30	5	20.2	27	5 x 5 x 27
ø22	40	7	25	35	7 x 7 x 35
ø28	45	7	31.1	40	7 x 7 x 40
ø32	55	10	35.5	50	10 x 8 x 50
ø40	65	10	43.5	60	10 x 8 x 60

Unit (mm)

功率 Power	减速比 Ratio	箱体 Code	规格 Size	A	D	E	F	G	H	J	K	L	M	Y	Z
100W 1/8HP	3-50	1#	*ø18	250	50	140	120	120	9	16	40	12	133	6	120
	60-200	2#	ø22	280	148	185	175	165	11	17.5	50	12	133	3	120
200W 1/4HP	3-10	1#	*ø18	280	50	140	120	120	9	16	40	12	133	6	120
	15-90	2#	ø22	315	148	185	175	165	11	17.5	50	12	133	3	120
	100-200	3#	ø28	350	170	220	205	195	11	23	60	13	133	3	120
400W 1/2HP	3-10	2#	ø22	330	148	185	175	165	11	17.5	50	12	167	3	135
	15-90	3#	ø28	360	170	220	205	195	11	23	60	13	167	3	135
	100-200	4#	ø32	395	185	255	248	225	13	30	70	16	167	3	135
750W 1HP	3-25	3#	ø28	380	170	220	205	195	11	23	60	13	167	3	135
	30-120	4#	ø32	410	185	255	248	225	13	30	70	16	167	3	135
	125-200	5#	ø40	465	230	310	290	268	15	36	85	21	167	5	135
1500W 2HP	3-30	4#	ø32	450	185	255	248	225	13	30	70	16	192	3	146
	40-120	5#	ø40	510	230	310	290	268	15	36	85	21	192	5	146
2200W 3HP	3-120	5#	ø40	520	230	310	290	268	15	36	85	21	220	5	160
3700W 5HP	3-10	5#	ø40	560	230	310	290	268	13	36	85	21	220	5	160
	15-60	6#	ø50	620	280	390	360	335	18	51	92	25	220	5	160

备注: 带 * 属于 B 型连接法兰 / Belong To B Type Output Flange